

Community Ownership:

Supplementary Information and Links

Blairbeg Community Woods – Drumnadrochit

Kilmore Road

Drumnadrochit

INVERNESS

IV63 6UG



GURCA: The Glenurquhart Rural Community Association

www.gurca.co.uk

'Glenurquhart's Development Trust'

GURCA's overall vision is to develop, inspire and embrace a vibrant future for our area. The trust aims to encourage and facilitate a collaborative and inclusive approach to identifying, supporting and delivering relevant developments and community led initiatives; to sustain or improve the quality of life, work and leisure, for the people of Glen Urquhart.

We work with other partner organisations and groups to deliver a range of projects, look after community assets and run community activities. In many instances we apply for funding to help us deliver those activities and projects

We own and maintain numerous assets. Through this we generate income (from the Loch Ness Hub, Blairbeg Park and the Market on the Green). We also own and hire out the Glenurquhart Public Hall.

GURCA is a registered Scottish Charity (SC020223) and is constituted as a Two-Tier SCIO (Scottish Charitable Incorporated Organisation). GURCA was established in 1949.

GURCA's constitution and most recent accounts are attached.

Blairbeg Community Woodland – the 3 plots

Plot 1 – The Bradley Martin Memorial Garden

Plot 2 – Blairbeg Woods North

Plot 3 – Blairbeg Woods East

(plot 4 Blairbeg Woods is owned by the same landowner but not for sale at this time)

Location – 3 plots of woodland in the village of Drumnadrochit



Local Housing Developments either side of the 3 plots

Loch Ness Park – Compass (previously R House)- Planning Application

<https://wam.highland.gov.uk/wam/applicationDetails.do?keyVal=R7NEMXIHL3I00&activeTab=summary>

Drum Farm – Springfield - Planning Application

<https://wam.highland.gov.uk/wam/applicationDetails.do?keyVal=QWULD1IHGJQ00&activeTab=summary>



Viewed from Druimlon looking East Across to Loch Ness. Plot 2 is to the right of these pictures for context (August 30th 2022)

Community Woodlands in our Region

A list of some of the community woodlands (from the Community Woodlands Association) in our region, building reciprocal relationships with these will benefit all parties as experience and learning can be shared as we develop our project.

Abriachan Forest Trust

<http://www.abriachan.org.uk/>

Aigas Community Forest

<https://www.aigasforest.org.uk/>

Aird Community Trust – Upper Reelig Community Wood

<http://www.airdcommunity.com/aird-community-trust/community-woodland/>

Aultnaskiach Community Woods -Inverness

<https://www.aultnaskiach.org.uk/>

Culduthel Community Woods – Inverness

<https://www.culduthelwoods.org/>

Dulnain Community Woods - Inverness

<https://www.dunainwoods.com/>

Evanton Wood Community Company

<https://www.evantonwood.com/>

Findhorn Hinterland Trust

<https://www.findhornhinterland.org/>

Forres Friends of Woods and Fields

<https://www.forresfriends.com/>

Gearrhoille Community Woodland -Ardgay

<http://www.gearrhoillecommunitywoodardgay.org.uk/>

Glengarry Community Woods

<https://www.glengarry.org.uk/>

Knocknagael - Inverness

<https://www.knocknagael.org.uk/about-us>

Strathnairn Community Woodlands

<https://www.strathnairn.org.uk/strathnairncommunitywoodlands.asp>

Community Woods Association

<https://www.communitywoods.org/>

There are around 200 groups across Scotland, involved in or responsible for the management of thousands of hectares of woodland and open space. Just over half own their woodlands, the remainder lease or work through a variety of formal and informal partnership arrangements.

CWA was set up by its members to:

- Promote and represent community woodland groups within the political arena and to the wider world, and
- Support established and new community woodland groups to achieve their aspirations.

We network the community woodland movement through conferences, seminars and newsletters, and provide training and in-depth support across a range of themes, including:

- Acquiring land
- Woodland management
- Social enterprise development
- Capacity building and community involvement
- Recreation, arts, culture and heritage

<https://www.communitywoods.org/>



Craigmonie Woodland Association

<https://www.facebook.com/craigmoniewoods/>

CWA Constitution attached.

Craigmonie Woodland Association (CWA) will work with GURCA to agree a management plan which would include all aspects of the woodland management from trimming trees, removing non-native trees, planting trees, clearing drainage ditches and maintaining footpath access. In August 2021 the Association adopted a new constitution that enabled them to broaden the scope of their activities to other woodland sites not just Craigmonie.

GURCA would aim to make reasonable regular donations towards materials, equipment and insurance in return for the in kind, volunteer labour. The Group currently have around 15 active members that meet once a month as a whole and more regularly in smaller groups to work on a number of projects. Between May 2021 and 2022 some 387

hours of volunteer work was recorded over 27 work parties. The group hosted two days with Students from Scottish Rural Agricultural College campuses (Aberdeen and Dundee) with students gaining experience in a variety of skills. The group also provide free bags of Christmas Logs to local pensioners, something that will be more important than ever in 2022.



The Group has excellent working relationships with Forestry and Land Scotland and the Woodland Trust Scotland.

Woodlands in Drumnadrochit

Balmacaan

<https://www.woodlandtrust.org.uk/visiting-woods/woods/balmacaan/>

Craigmonie

<https://forestryandland.gov.scot/visit/craigmonie>

The 'Cover' Urquhart Bay Woods

<https://www.woodlandtrust.org.uk/visiting-woods/woods/urquhart-bay/>

Divach Falls

<https://forestryandland.gov.scot/visit/divach-falls>

Rewilding Initiatives in our Area

Highlands Rewilding (Bunloit – Glen Urquhart)

<https://www.highlandsrewilding.co.uk/>

Rewilding Europe

<https://rewildingeurope.com/rew-project/affric-highlands/>

Trees for life (Dundreggan)

<https://treesforlife.org.uk/>

The Loch Ness Hub



<https://lochnesshub.com/>

<https://www.hie.co.uk/lochnesshub>

A Visitor Information Centre incorporating Loch Ness Travel, offering Great Glen Way Baggage & Shuttle Transfers, located in Drumnadrochit, Loch Ness.

Loch Ness Hub is also Community Transport Hub promoting health walks and greener modes of transport e.g., E-Bikes. E-Bike hire, and Community E-bike trials are available from the hub, situated in the main car park in Drumnadrochit.

Loch Ness Hub is your one stop shop for visitor information, tours, tickets and everything that is Glen Urquhart and Loch Ness. Urquhart Castle and Jacobite Cruises tickets are available to buy in the shop, as well as Isle of Skye Coach Tours, with pick up and drop off from Drumnadrochit.

Loch Ness Hub Ltd is a community benefit company which puts any profits from its operations, back into the local community. On the 19th September 2020, we launched our community share offer at the former TIC building. The funds generated from this facilitated the purchase of an existing baggage transfer company, allowing the project to be a profitable business and in turn generating funds for the community. GURCA is the anchor shareholder in this project.

Glen Urquhart Public Hall

Built in 1906 and funded by an American benefactor who lived nearby at Balmacaan House. The Hall (owned and run by GURCA) is in need of significant refurbishment. GURCA has made great strides with this and in the Summer of 2022 the main roof was reslated (with funding from Scottish Government/Highland Council Place Based Fund, Soirbheas Tier 2 and GURCA). 3 large new windows were also installed in the main building with funds from Highlands and Islands Enterprise (HIE) Greening Community Assets and Soirheas Tier 2 funding.

The Hall's Business/redevelopment plan is based on 4 pillars – Economic, Wellbeing, Heritage, and Infrastructure and the symbiosis between them is key to helping our community at this most challenging of times. GURCA have launched a variety of activities to support Mental Health and wellbeing supported by

Significant strides have been made in June/July 2022 with a new slate roof on the main building (GURCA were successful in gaining £45,000 Scottish Government Place Based funding from the Highland Council with £5000 match funding from Soirbheas and the remainder of the balance from GURCA).

A Plot 1 the Bradley Martin Garden as described in this application adds significant amenity Value to the Hall and the Hall's Business Plan is submitted with this application.



New Hall Roof and the Bradley Martin Memorial Garden Plot 1 viewed from the A82/Kilmore Road Junction.



The Bradley Martin Memorial Garden viewed from Kilmore road

Glenurquhart Care Project



The Care Centre with Plot 3 East directly behind

The Glenurquhart Care Project was founded as a Scottish charity in 1995 and is a registered business with Companies House. In 2000, it opened the doors of the The Glenurquhart Centre, a facility which was developed and built by the charity and since then has been providing a range of care services to the elderly and vulnerable in our community which covers Drumnadrochit, Glenurquhart, Kiltarlity, Kirkhill, Beauly, Strathglass and Abriachan.

In 2019, community housing which provides homes for the elderly and vulnerable was opened next door to the Glenurquhart Centre

<https://www.glenurquhartcareproject.org/>

Dementia friendly woodlands –

<https://www.pathsforall.org.uk/>

in 2019 Paths for all helped establish Scotland's first ever Dementia Friendly Woodlands at Evanton Community Woodland some 30 miles to the North of Drumnadrochit. Many of the features of this could easily be adopted to benefit the Centre's service users. The Centre backs onto to the East Plot (3) and a winding path with benches and some sensory planting could have a real benefit on the service users' mental health and wellbeing



Community housing and the East Woods at the rear of the centre

Glen Urquhart Childcare Centre

<http://www.glenurquhartchildcarecentre.com/>

The Glen Urquhart Childcare Centre is a community run group formed in 1995 providing a stimulating learning environment for children in the Glen Urquhart area.

The centre offers wrap around care for children aged 3-13 years inclusive. This includes breakfast club, government funded nursery sessions for 3-5 year olds, day-care, out of school club and holiday club.

The Centre is open from 8am till 6pm during term time and 8am till 6pm during school holidays.

The centre has extensive experience with Forest School Activities

'Our weekly Forest School aims to enhance the children's learning in an outdoor environment. We will provide opportunities for the children to engage with nature, learn new skills and discover the world through outdoor play. The learning will be child led with the teachers acting as facilitators.

Forest School has a holistic approach to child development having an overall positive impact on the children'

Examples of the types of structured activities the children do are:

- *Shelter building*
- *Natural art*
- *Story telling*
- *Safe tool use*
- *Tree recognition*
- *Animal tracks*
- *Natural games*
- *Fire lighting*
- *Kelly Kettle activities and basic cooking*
- *Crafts*
- *Path finding and exploration*
- *Bug hunts and much much more ...!*

Scottish Charitable Incorporated Organisation SC024692

Soirbheas

www.soirbheas.org

Soirbheas are a registered charity, whose objectives are to strengthen and support the communities of Glen Urquhart and Strathglass, through revenues from local renewable energy schemes.

The money generated by these schemes is reinvested in the community via the charity's grant programmes, and key projects delivered with partners organisations and local community groups.

To support local initiatives that help protect our environment, provide training and promote employment opportunities, and projects that help make our communities more resilient. Soirbheas run volunteer health walks in Glenurquart every Tuesday from 14:00

Nature Connection

We will seek to work with a variety of local groups to promote the use of woodlands these include. Many folk realised the benefits of connecting with our natural world during Lockdowns and the Coronavirus restrictions during 2020 and 2021. A great deal of evidence based research has taken place and leading the way in the UK is the University of Derby and Professor Miles Richardson and the Nature Connectedness group.

<https://www.derby.ac.uk/research/centres-groups/nature-connectedness-research-group/>

The pathways to nature connectedness provide a route for people to develop a new relationship with the natural world. This new relationship with nature can move beyond utility and control, beyond knowledge and identification. A new closer, healthier and more sustainable relationship with nature comes through noticing, feeling, beauty, celebration and care. Our pathways are:

Senses - tuning in to nature through the senses

Emotion - feeling alive through the emotions and feelings

nature brings

Beauty - noticing nature's beauty

Meaning - nature bringing meaning to our lives

Compassion - caring and taking action for nature



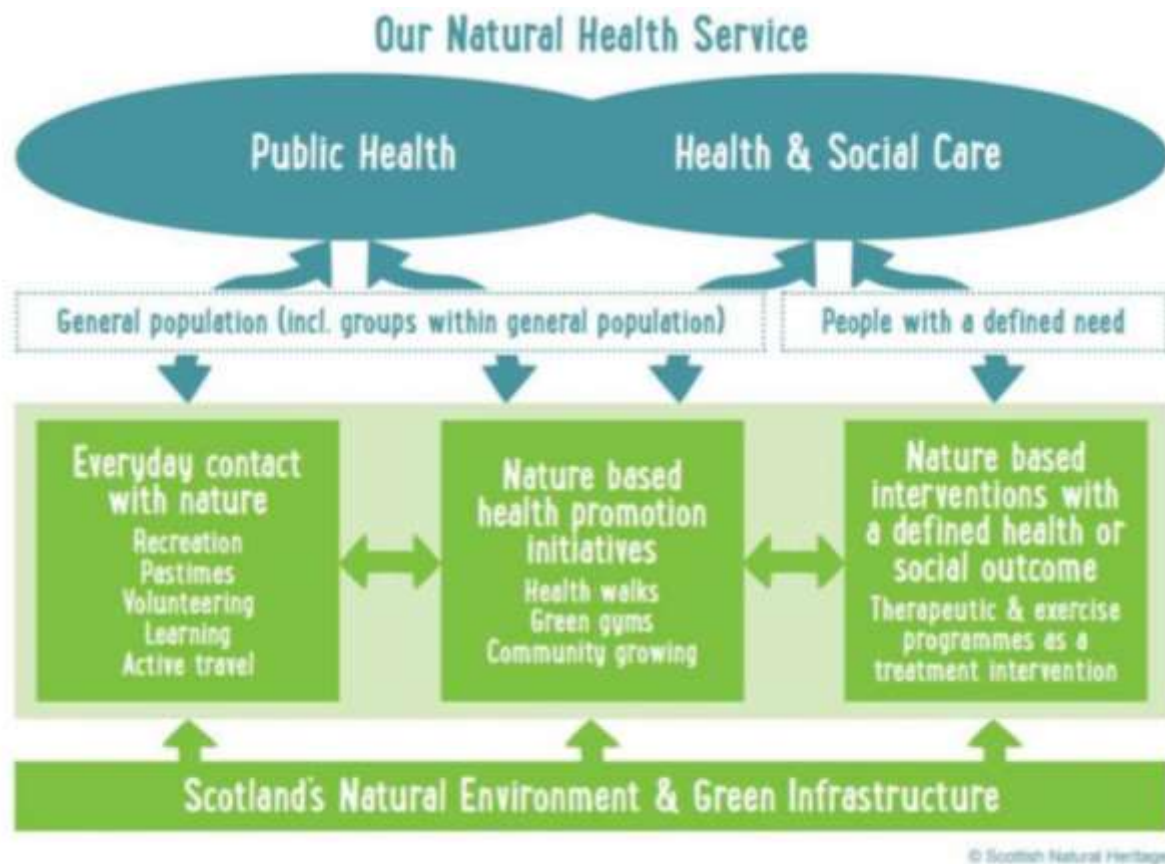
<https://findingnature.org.uk/2017/05/10/beyond-knowing-nature/>

Think Health think Nature – a project in the Scottish Highlands

<https://www.thinkhealththinknature.scot/>

<https://findingnature.org.uk/2017/05/10/beyond-knowing-nature/>

Think Health Think Nature is one of four initiatives in Scotland stemming from '**Our Natural Health Service**'



This project aims to show how Scotland’s natural environment is a resource that can be used to help tackle some of our key health issues. Our vision involves providing opportunities and building on existing resources that can support individuals and communities throughout the Highlands with improvements to their health and wellbeing, through engaging with the natural environment around them.

Our Aims:

- To get more people to use the outdoor environment and more regularly
- To contribute to reducing health inequalities by targeting activity at those who are most in need
- To co-ordinate partnership efforts on use of the outdoor environment for health
- To identify existing assets, make links between them, and identify gaps in provision
- To develop a network of those with an interest in promoting the outdoor environment for health
- To create a shared learning environment

The Partnership:

The Think Health Think Nature partnership meets quarterly, and is chaired by the Head of Health Improvement within the NHS Highland Public Health Team. The workplan is coordinated by the Senior Development Officer for Green Health, employed through NHS Highland. The work has been funded through the Our Natural Health Service programme, led by NatureScot and will run for an initial period of 5 years from 2018 – 2023.

The Partnership is made up of the following organisations:

NHS Highland, NatureScot, High Life Highland, Highland Third Sector Interface, Paths for All, The University of the Highlands and Islands, The Cairngorms National Park Authority Forestry and Land Scotland, The Highland Council, Representatives from the Environment, Health and Social Care Sectors.

Clarity Walks (inverness)

<https://claritywalk.co.uk/>

Nature 4 Health (N4H)

<https://www.n4h.co.uk>

Velocity (Inverness)

<https://www.velocitylove.co.uk/about>

Disc Golf – Scotland

Disc Golf is one of many activities that could be trialed in the woods

British Disc Golf Association

<https://bdga.org.uk/play-disc-golf/>

Discover Disc Golf

<https://www.discoverdiscgolfuk.com/>

Scottish Disc Golf Association

<https://www.scottishdiscgolfassociation.co.uk/courses>



Local Enthusiasts in Plot 3 Blairbeg Woods East



Torvean Disc Golf Course (Inverness) Established in 2021



Torvean Course -Inverness

Description from U-Disc. *This is a beautiful park that used to be part of Torvean Golf Course. You can park at Torvean Car Park and follow the path to the park. It currently has 5 permanent baskets with a 18 hole layout. This is a public park and is mainly used by people to walk with dogs or running. All paths are well defined and are O.B. Please be mindful of other people around you when playing.*

Grass, Gravel, Outdoor Carpet Tees

The Keep Targets

Established 2021

Dogs Allowed

Cart Friendly

No Drinking Water Available

No Restroom Available

Reviews Scores out of 5

@ejspeyer Aug 09, 2022 **4.5**

"Came here as an American tourist, had a great time! Easy parking. Beautiful scenery, my favorite holes were 12 and 17. Super windy, but a fun challenge. Some tee locations missing but UDisc helped me out. There's a handful of baskets around the course that aren't in use on the 18-hole design but it seems like the local org is planning to get them involved soon."

@jd22ac Jul 10, 2022 **5.0**

"Nice 18-hole course on a few baskets. Just a few non-disc golfers around. Met some lovely locals who told me that they are planning new baskets. "

@usmcm8 Jun 22, 2022 **3.5**

"Played here while on vacation from the US. Rating is 3.5 mainly due to having only 5 baskets with holes where you play the hole then backtrack to a different teeing area and play to the same basket."

However, fun layout. Does a great job of using the park, fun elevation shots, a nice water carry with a gap, good variety of shot types, mostly open but good use of trees and basket placements. Friendly locals. Talked to the designer and no doubt will be a great course when resources permit."

@bazpoint Jun 05, 2022 4.0

"Played a round here while holidaying... really nice little course. Udisc currently essential as a couple of tee boards are missing. Fairly basic but pleasant front 9, but some really tricky holes on the back 9. Plays over multiple footpaths so may be awkward on busy days in the park. Spotter required on several holes on the back 9. 17 plays over water & 18 over very heavy rough so both may need to be skipped for beginners. Difficulty of whole course increased by wind-tunnel like park. "

Key Points and Disc Golf potential:

It's a growing sport and Glasgow is one of the main centres outside of the United States, there is a local 'scene' but the sport also attracts visitors from further afield and has many benefits for local tourism. There is the potential to get Inverness and Drumnadrochit on the 'Tour'.

Much of the work/fundraising could be done by volunteers locally on a non profit basis. The Loch Ness Hub could provide rental of discs.

The infrastructure to put this in place is not permanent unlike a Golf course. We have the advantage over Torvean in that there are Toilet facilities nearby at the Loch Ness Hub. A redeveloped/refurbished Glen Urquhat Public Hall could also operate as a Base for these activities.

It's a great way to increase your step count, have fun with friends and something for all the family.

Loch Ness Crafts Trail

<https://www.facebook.com/lochnesscrafttrail/>

7 local studios which are part of the trail for 2022. Links to the artisans and creators. Many exhibit at the twice monthly (April- October) Market on the Green held on Drumnadrochit Village Green. The Market is organised by volunteers and generates sustainable income for GURCA.

1. Bunloit Woolery

<https://www.facebook.com/BunloitWoolery/>

2. A'fiodh Tuairnear Highland Wood Turning:

<https://www.facebook.com/Highlandwoodturning/>

3. Loch Ness Knitting:

<https://www.facebook.com/lochnessknitting/>

4. Dramatic Scotland Creation:

<https://www.facebook.com/DramaticScotland/>

5. K Price Art:

<https://www.facebook.com/theglenaffricstudio/>

6. Highland Celtic Art:

<https://www.facebook.com/HighlandCelticArt>

7. Earthgems Jewellery:

<https://www.facebook.com/earthgemsjewellery>

Glen Urquhart Shinty Club

Plot 1 and 2 are immediately opposite Blairbeg Park owned by GURCA and leased to Glen Urquhart Shinty Club on a 99 year lease.



Blairbeg Park viewed from the pavement next to Plot 1 the Bradley Martin Memorial Garden

<https://glenurquhartshintyclub.com/>

Some Other Useful Links

Forestry and Land Scotland

<https://forestryandland.gov.scot/>

Highland Environment Forum

<https://www.highlandenvironmentforum.info/>

Nature Scot

<https://www.nature.scot/>

Woodland Trust Scotland

<https://www.woodlandtrust.org.uk/about-us/where-we-work/scotland/>